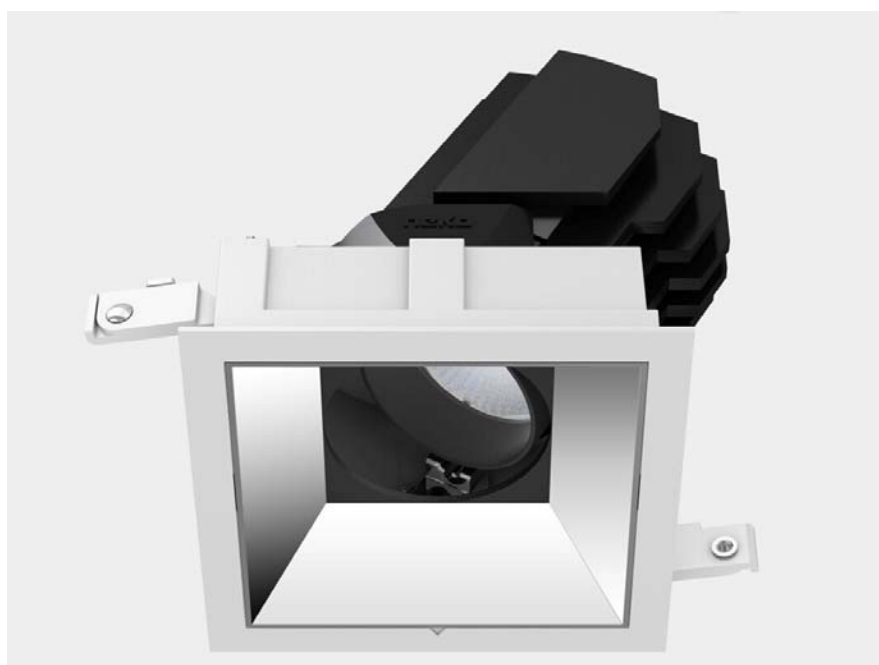

LED Downlight SENSE Series LE-
S100S1-13W-930-N



Light Output Ratio:	100.0%	
Luminaire Power:	14.41 W	
SHR Nominal:	0.00	Calculated using the TM5
SHR Maximum:	1.00	fine grid method.

C Range: 0 - 360DEG
C Interval: 15.0DEG
Test Speed: HIGH
Temperature: 25.3DEG
Operators: Meng Yongjian
Test Date: 2017-06-16

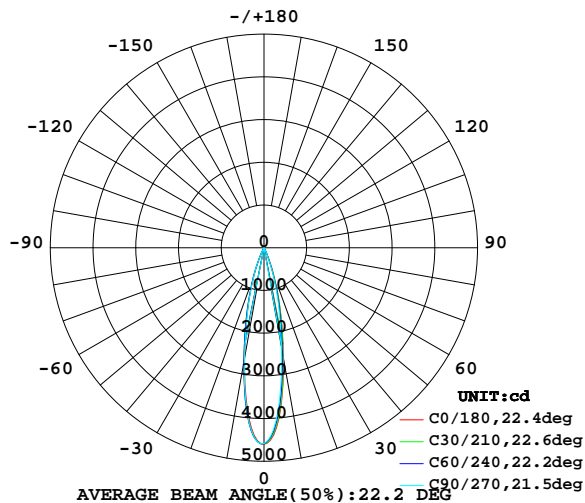
γ Range: 0 - 90DEG
γ Interval: 1.0DEG
Test System: EVERFINE GO-2000B_V1 SYSTEM V2.0.288
Humidity: 52%
Test Distance: 5.850m [K=1.0000]
Remarks:

LUMINAIRE PHOTOMETRIC TEST REPORT

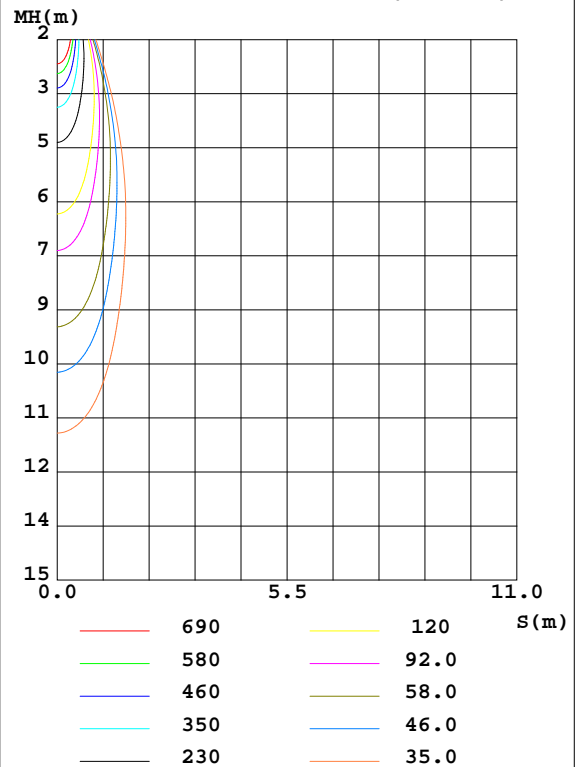
Test:U:220.8V I:0.0710A P:14.41W PF:0.9192 Lamp Flux:845.62x1 lm		
NAME: S100S1-13W-930-N	TYPE:Downlight	SERIAL No.:
SPEC.:3000K	DIM.: L108mm*W108mm*H126mm	
MFR.:		

DATA OF LAMP		PHOTOMETRIC DATA Eff: 58.69 lm/W			
MODEL	CITIZEN-3000K	Imax(cd)	4601	S/MH(C0/180)	0.38
NOMINAL POWER(W)	15	LOR(%)	100.0	S/MH(C90/270)	0.39
RATED VOLTAGE(V)	220	TOTAL FLUX(lm)	845.62	η UP,DN(C0-180)	0.0,47.7
NOMINAL FLUX(lm)	845.62	CIE CLASS	DIRECT	η UP,DN(C180-360)	0.0,52.3
LAMPS INSIDE	1	η up(%)	0.0	CIBSE SHR NOM	0.00
TEST VOLTAGE(V)	220	η down(%)	100.0	CIBSE SHR MAX	1.00

LUMINOUS INTENSITY DISTRIBUTION DIAGRAM



C0 PLANE ISOLUX DIAGRAM (UNIT:lx)



C Range: 0 - 360DEG
 C Interval: 15.0DEG
 Test Speed: HIGH
 Temperature:25.3DEG
 Operators:Meng Yongjian
 Test Date:2017-06-16

γ Range: 0 - 90DEG
 γ Interval: 1.0DEG
 Test System:EVERFINE GO-2000B_V1 SYSTEM V2.0.288
 Humidity:52%
 Test Distance:5.850m [K=1.0000]
 Remarks:

ZONAL FLUX DIAGRAM AND LUMINANCE LIMITATION CURVES

ZONAL FLUX DIAGRAM:

γ	C0	C45	C90	C135	C180	C225	C270	C315	γ	Φ zone	Φ total	$\%lum, lamp$
10	2619	2565	2355	2374	2627	2698	2648	2594	0- 10	332.3	332.3	39.3,39.3
20	641.8	607.0	532.9	564.4	673.8	730.7	699.4	668.1	10- 20	388.3	720.6	85.2,85.2
30	44.93	43.19	35.24	38.23	45.57	56.38	47.57	43.23	20- 30	101.4	822.0	97.2,97.2
40	12.56	13.14	11.53	13.52	13.56	14.58	13.71	13.65	30- 40	14.78	836.8	99,99
50	3.556	4.921	3.650	5.310	3.992	5.691	4.112	5.334	40- 50	6.400	843.2	99.7,99.7
60	0.3387	1.052	0.3476	1.237	0.5203	1.301	0.5769	1.312	50- 60	2.151	845.3	100,100
70	0.0525	0.0372	0.0525	0.0393	0.0393	0.0612	0.0371	0.0612	60- 70	0.2159	845.5	100,100
80	0.0328	0.0328	0.0350	0.0350	0.0284	0.0241	0.0306	0.0262	70- 80	0.0355	845.6	100,100
90	0.0350	0.0372	0.0394	0.0372	0.0284	0.0241	0.0284	0.0262	80- 90	0.0346	845.6	100,100
100									90-100			
110									100-110			
120									110-120			
130									120-130			
140									130-140			
150									140-150			
160									150-160			
170									160-170			
180									170-180			
DEG	LUMINOUS INTENSITY:cd									UNIT:lm		



LUMINANCE cd/(m2)		
G(°)	C0/180	C90/270
85	34	39
80	16	17
75	11	12
70	13	13
65	14	14
60	58	60
55	252	257
50	474	487
45	871	819

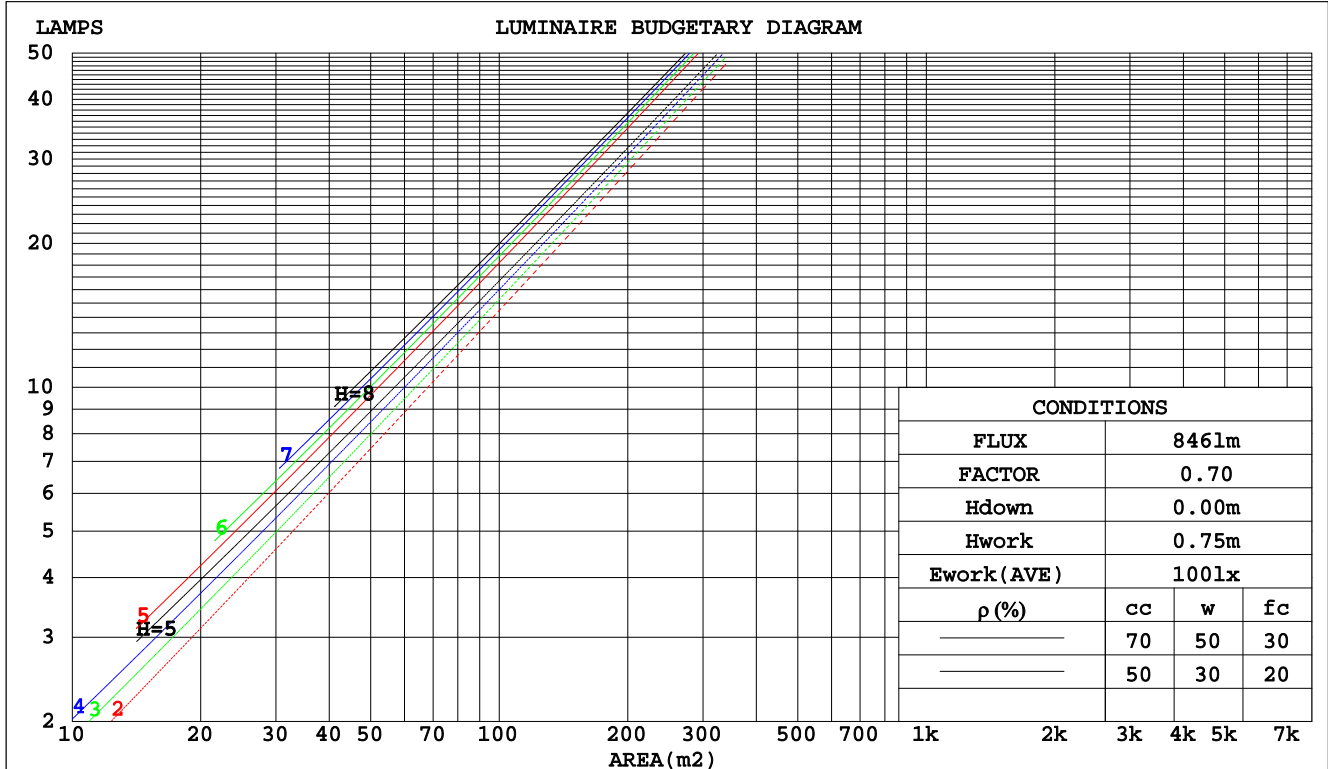
C Range: 0 - 360DEG
 C Interval: 15.0DEG
 Test Speed: HIGH
 Temperature: 25.3DEG
 Operators: Meng Yongjian
 Test Date: 2017-06-16

γ Range: 0 - 90DEG
 γ Interval: 1.0DEG
 Test System: EVERFINE GO-2000B_V1 SYSTEM V2.0.288
 Humidity: 52%
 Test Distance: 5.850m [K=1.0000]
 Remarks:

CU AND LUMINAIRE BUDGETARY ESTIMATE DIAGRAM

Test:U:220.8V I:0.0710A P:14.41W PF:0.9192 Lamp Flux:845.62x1 lm		
NAME: S100S1-13W-930-N	TYPE:Downlight	SERIAL No.:
SPEC.:3000K	DIM.: L108mm*W108mm*H126mm	
MFR.:		

pcc	80%			70%			50%			30%			10%			0
pw	50%	30%	10%	50%	30%	10%	50%	30%	10%	50%	30%	10%	50%	30%	10%	0
pfc	20%			20%			20%			20%			20%			0
RCR	RCR:Room Cavity Ratio			Coefficients of Utilization(CU)												
0.0	1.19	1.19	1.19	1.16	1.16	1.16	1.11	1.11	1.11	1.06	1.06	1.06	1.02	1.02	1.02	1.00
1.0	1.13	1.11	1.10	1.11	1.09	1.08	1.07	1.06	1.05	1.03	1.02	1.02	1.00	.99	.99	.97
2.0	1.08	1.05	1.03	1.07	1.04	1.02	1.03	1.01	.00	1.01	.99	.98	.98	.97	.96	.94
3.0	1.04	1.01	.98	1.03	.00	.97	1.00	.98	.96	.98	.96	.94	.96	.94	.93	.91
4.0	1.00	.96	.94	.99	.96	.93	.97	.94	.92	.95	.93	.91	.94	.92	.90	.89
5.0	.97	.93	.90	.96	.92	.90	.94	.91	.89	.93	.90	.88	.92	.89	.88	.86
6.0	.94	.90	.87	.93	.89	.87	.92	.89	.86	.91	.88	.86	.90	.87	.85	.84
7.0	.91	.87	.84	.91	.87	.84	.89	.86	.84	.88	.86	.83	.88	.85	.83	.82
8.0	.89	.85	.82	.88	.84	.82	.87	.84	.82	.86	.83	.81	.86	.83	.81	.80
9.0	.86	.82	.80	.86	.82	.80	.85	.82	.80	.84	.81	.79	.84	.81	.79	.78
10.0	.84	.80	.78	.84	.80	.78	.83	.80	.78	.82	.80	.77	.82	.79	.77	.76



C Range: 0 - 360DEG
 C Interval: 15.0DEG
 Test Speed: HIGH
 Temperature:25.3DEG
 Operators:Meng Yongjian
 Test Date:2017-06-16

γ Range: 0 - 90DEG
 γ Interval: 1.0DEG
 Test System:EVERFINE GO-2000B_V1 SYSTEM V2.0.288
 Humidity:52%
 Test Distance:5.850m [K=1.0000]
 Remarks:

WEC AND CCEC

Test:U:220.8V I:0.0710A P:14.41W PF:0.9192 Lamp Flux:845.62x1 lm		
NAME: S100S1-13W-930-N	TYPE:Downlight	SERIAL No.:
SPEC.:3000K	DIM.: L108mm*W108mm*H126mm	
MFR.:		

pcc	80%			70%			50%			30%			10%			0	
pw	50%	30%	10%	50%	30%	10%	50%	30%	10%	50%	30%	10%	50%	30%	10%	0	
pfc	20%			20%			20%			20%			20%			0	
RCR	RCR:Room Cavity Ratio						Wall Exitance Coefficients(WEC)										
0.0																	
1.0	.131	.075	.024	.125	.071	.023	.112	.064	.021	.101	.058	.019	.090	.052	.017		
2.0	.121	.066	.020	.116	.064	.020	.105	.059	.018	.096	.054	.017	.087	.049	.016		
3.0	.112	.060	.018	.108	.058	.017	.099	.054	.016	.092	.050	.015	.084	.047	.014		
4.0	.105	.055	.016	.101	.053	.016	.094	.050	.015	.088	.047	.014	.081	.044	.013		
5.0	.099	.050	.015	.096	.049	.014	.090	.047	.014	.084	.044	.013	.079	.042	.013		
6.0	.093	.047	.013	.091	.046	.013	.085	.044	.013	.081	.042	.012	.076	.040	.012		
7.0	.088	.044	.012	.086	.043	.012	.082	.041	.012	.077	.040	.012	.074	.038	.011		
8.0	.084	.041	.012	.082	.040	.011	.078	.039	.011	.075	.038	.011	.071	.037	.011		
9.0	.080	.039	.011	.079	.038	.011	.075	.037	.011	.072	.036	.010	.069	.035	.010		
10.0	.077	.037	.010	.075	.036	.010	.072	.035	.010	.070	.035	.010	.067	.034	.010		

pcc	80%			70%			50%			30%			10%			0
pw	50%	30%	10%	50%	30%	10%	50%	30%	10%	50%	30%	10%	50%	30%	10%	0
pfc	20%			20%			20%			20%			20%			0
RCR	RCR:Room Cavity Ratio						Ceiling Cavity Exitance Coefficients(CCEC)									
0.0	.190	.190	.190	.163	.163	.163	.111	.111	.111	.064	.064	.064	.020	.020	.020	
1.0	.168	.158	.148	.144	.135	.128	.098	.093	.088	.057	.054	.051	.018	.017	.017	
2.0	.149	.133	.119	.128	.114	.103	.088	.079	.072	.051	.046	.042	.016	.015	.014	
3.0	.134	.113	.097	.115	.098	.084	.079	.068	.059	.046	.040	.035	.015	.013	.011	
4.0	.121	.098	.080	.104	.084	.069	.072	.059	.049	.041	.034	.029	.013	.011	.009	
5.0	.111	.085	.067	.095	.074	.058	.065	.052	.041	.038	.030	.024	.012	.010	.008	
6.0	.101	.075	.056	.087	.065	.049	.060	.046	.035	.035	.027	.021	.011	.009	.007	
7.0	.094	.067	.048	.081	.058	.042	.056	.041	.030	.032	.024	.018	.010	.008	.006	
8.0	.087	.060	.042	.075	.052	.036	.052	.037	.026	.030	.022	.015	.010	.007	.005	
9.0	.081	.054	.036	.070	.047	.032	.049	.033	.022	.028	.020	.013	.009	.006	.004	
10.0	.076	.050	.032	.066	.043	.028	.046	.030	.020	.027	.018	.012	.009	.006	.004	

C Range: 0 - 360DEG
 C Interval: 15.0DEG
 Test Speed: HIGH
 Temperature:25.3DEG
 Operators:Meng Yongjian
 Test Date:2017-06-16

γ Range: 0 - 90DEG
 γ Interval: 1.0DEG
 Test System:EVERFINE GO-2000B_V1 SYSTEM V2.0.288
 Humidity:52%
 Test Distance:5.850m [K=1.0000]
 Remarks:

UGR(Unified Glare Rating) Table

Test:U:220.8V I:0.0710A P:14.41W PF:0.9192 Lamp Flux:845.62x1 lm										
NAME: S100S1-13W-930-N					TYPE:Downlight			SERIAL No.:		
SPEC.:3000K					DIM.: L108mm*W108mm*H126mm					
MFR.:										
ceiling/cavity	0.7	0.7	0.5	0.5	0.3	0.7	0.7	0.5	0.5	0.3
walls	0.5	0.3	0.5	0.3	0.3	0.5	0.3	0.5	0.3	0.3
working plane	0.2	0.2	0.2	0.2	0.2	0.2	0.2	0.2	0.2	0.2
Room dimensions	Viewed crosswise					Viewed endwise				
x = 2H y = 2H	-0.8	-0.2	-0.6	-0.0	0.1	-1.3	-0.7	-1.1	-0.6	-0.4
3H	-0.9	-0.4	-0.7	-0.2	-0.0	-1.5	-0.9	-1.2	-0.7	-0.5
4H	-1.0	-0.5	-0.8	-0.3	-0.1	-1.5	-1.0	-1.3	-0.8	-0.6
6H	-1.1	-0.6	-0.8	-0.4	-0.1	-1.6	-1.1	-1.3	-0.9	-0.6
8H	-1.1	-0.6	-0.9	-0.4	-0.2	-1.7	-1.2	-1.4	-0.9	-0.7
12H	-1.2	-0.7	-0.9	-0.5	-0.2	-1.7	-1.2	-1.4	-1.0	-0.7
4H 2H	-1.0	-0.4	-0.7	-0.2	-0.0	-1.5	-0.9	-1.2	-0.7	-0.5
3H	-1.1	-0.7	-0.8	-0.4	-0.1	-1.6	-1.2	-1.3	-0.9	-0.6
4H	-1.2	-0.8	-0.9	-0.5	-0.2	-1.7	-1.3	-1.4	-1.0	-0.7
6H	-1.3	-0.9	-1.0	-0.6	-0.3	-1.8	-1.4	-1.5	-1.1	-0.8
8H	-1.4	-1.0	-1.0	-0.7	-0.3	-1.9	-1.5	-1.5	-1.2	-0.8
12H	-1.4	-1.1	-1.0	-0.7	-0.4	-1.9	-1.6	-1.5	-1.2	-0.9
8H 4H	-1.4	-1.0	-1.0	-0.7	-0.3	-1.9	-1.5	-1.5	-1.2	-0.8
6H	-1.5	-1.2	-1.1	-0.8	-0.4	-2.0	-1.7	-1.6	-1.3	-0.9
8H	-1.6	-1.3	-1.1	-0.9	-0.4	-2.1	-1.8	-1.6	-1.4	-0.9
12H	-1.6	-1.4	-1.2	-1.0	-0.5	-2.1	-1.9	-1.7	-1.5	-1.0
12H 4H	-1.5	-1.1	-1.0	-0.7	-0.4	-2.0	-1.6	-1.6	-1.2	-0.9
6H	-1.6	-1.3	-1.1	-0.9	-0.4	-2.1	-1.8	-1.6	-1.4	-0.9
8H	-1.6	-1.4	-1.2	-1.0	-0.5	-2.1	-1.9	-1.7	-1.5	-1.0
Variations with the observer position at spacings:										
S = 1.0H	+ 2.4 / - 9.2					+ 2.4 / - 8.5				
1.5H	+ 3.4 / - 4.3					+ 3.1 / - 4.0				
2.0H	+ 5.1 / -13.5					+ 4.8 / -14.1				

CIE Pub.117 Corrected 845.6 lm Total Lamp Luminous Flux.(8log(F/F0) = -0.6)

C Range: 0 - 360DEG
 C Interval: 15.0DEG
 Test Speed: HIGH
 Temperature:25.3DEG
 Operators:Meng Yongjian
 Test Date:2017-06-16

γ Range: 0 - 90DEG
 γ Interval: 1.0DEG
 Test System:EVERFINE GO-2000B_V1 SYSTEM V2.0.288
 Humidity:52%
 Test Distance:5.850m [K=1.0000]
 Remarks:

UTILIZATION FACTORS TABLE

Test:U:220.8V I:0.0710A P:14.41W PF:0.9192 Lamp Flux:845.62x1 lm		
NAME: S100S1-13W-930-N	TYPE:Downlight	SERIAL No.:
SPEC.:3000K	DIM.: L108mm*W108mm*H126mm	
MFR.:		

REFLECTANCE										
Ceiling	0.8	0.8	0.8	0.7	0.7	0.7	0.5	0.5	0.5	0
Walls	0.7	0.5	0.3	0.7	0.5	0.3	0.7	0.5	0.3	0
Working plane	0.2	0.2	0.2	0.2	0.2	0.2	0.2	0.2	0.2	0
ROOM INDEX	UTILIZATION FACTORS(PERCENT) $k(RI) \times RCR = 5$									
$k = 0.60$	91	85	82	90	85	82	90	85	82	78
0.80	98	93	89	97	92	89	96	92	89	86
1.00	102	97	93	101	96	93	99	96	93	89
1.25	105	101	97	104	100	97	102	99	96	92
1.50	108	103	100	106	103	100	104	101	99	95
2.00	110	106	103	108	105	102	106	103	101	96
2.50	111	108	105	110	107	104	107	104	102	97
3.00	113	110	107	111	108	106	108	106	104	98
4.00	115	112	110	113	110	109	109	107	106	99
5.00	116	114	112	114	112	110	110	108	107	100
ROOM INDEX	UF(total)									Direct
According to DIN EN 13032-2 2004			Suspended					SHRNOM = 1.25		

C Range: 0 - 360DEG
 C Interval: 15.0DEG
 Test Speed: HIGH
 Temperature:25.3DEG
 Operators:Meng Yongjian
 Test Date:2017-06-16

γ Range: 0 - 90DEG
 γ Interval: 1.0DEG
 Test System:EVERFINE GO-2000B_V1 SYSTEM V2.0.288
 Humidity:52%
 Test Distance:5.850m [K=1.0000]
 Remarks:

ISOCANDELA DIAGRAM

Test:U:220.8V I:0.0710A P:14.41W PF:0.9192 Lamp Flux:845.62x1 lm		
NAME: S100S1-13W-930-N	TYPE:Downlight	SERIAL No.:
SPEC.:3000K	DIM.: L108mm*W108mm*H126mm	
MFR.:		

Conical surface Flux(90deg):

840.68 lm

%lum = 99.4%

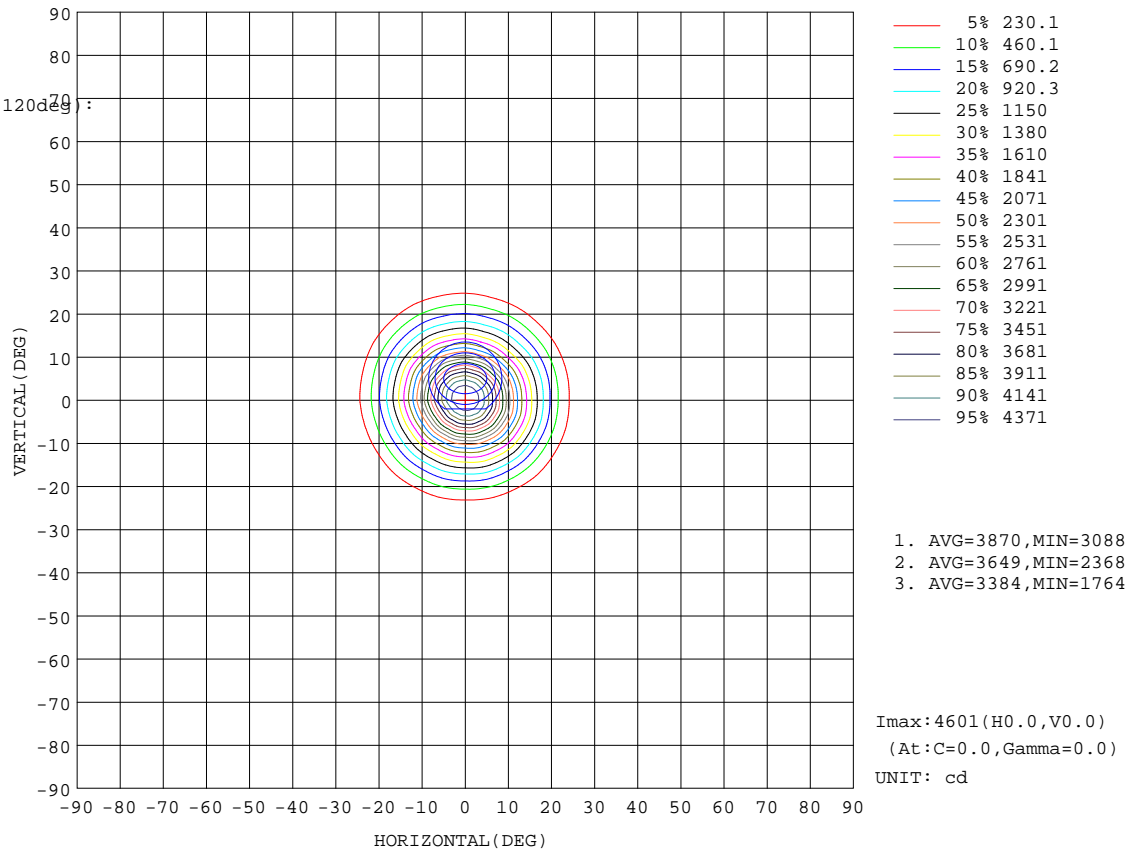
%lamp = 99.4%

Conical surface Flux(120deg):

845.33 lm

%lum = 100.0%

%lamp = 100.0%

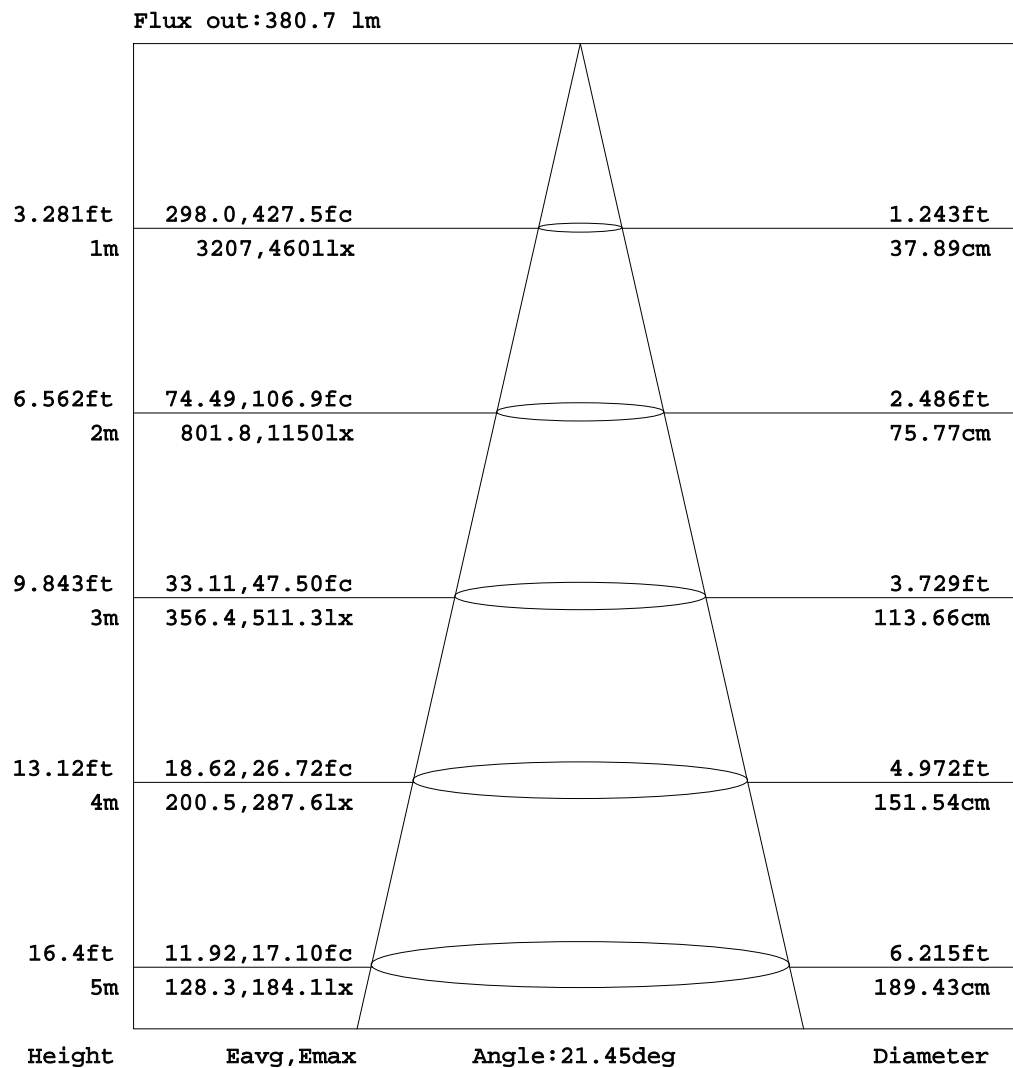


C Range: 0 - 360DEG
C Interval: 15.0DEG
Test Speed: HIGH
Temperature:25.3DEG
Operators:Meng Yongjian
Test Date:2017-06-16

γ Range: 0 - 90DEG
γ Interval: 1.0DEG
Test System:EVERFINE GO-2000B_V1 SYSTEM V2.0.288
Humidity:52%
Test Distance:5.850m [K=1.0000]
Remarks:

AAI Figure

Test:U:220.8V I:0.0710A P:14.41W PF:0.9192 Lamp Flux:845.62x1 lm		
NAME: S100S1-13W-930-N	TYPE:Downlight	SERIAL No.:
SPEC.:3000K	DIM.: L108mm*W108mm*H126mm	
MFR.:		



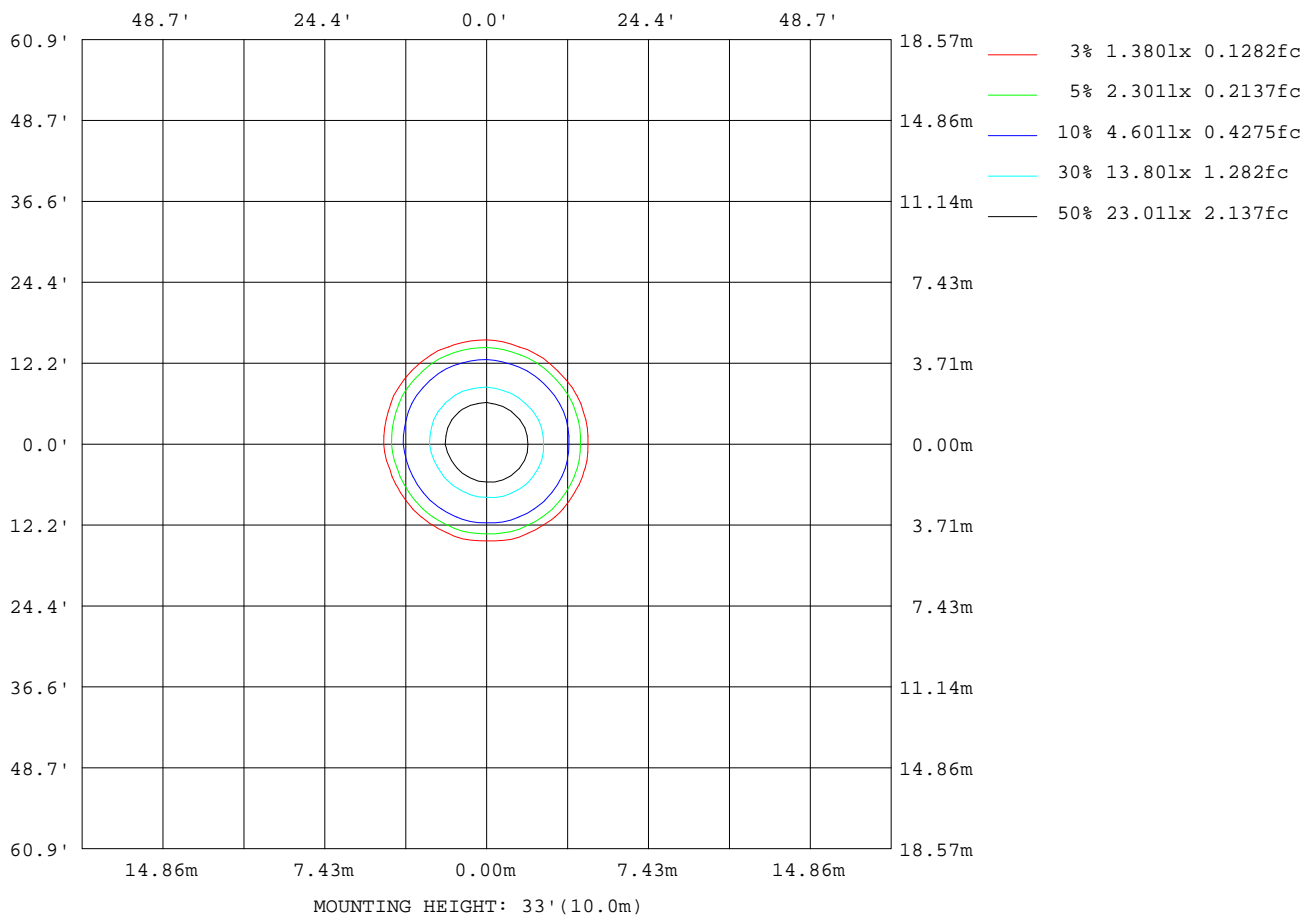
Note:The Curves indicate the illuminated area and the average illumination when the luminaire is at different distance.

C Range: 0 - 360DEG
C Interval: 15.0DEG
Test Speed: HIGH
Temperature:25.3DEG
Operators:Meng Yongjian
Test Date:2017-06-16

γ Range: 0 - 90DEG
γ Interval: 1.0DEG
Test System:EVERFINE GO-2000B_V1 SYSTEM V2.0.288
Humidity:52%
Test Distance:5.850m [K=1.0000]
Remarks:

ISOLUX DIAGRAM

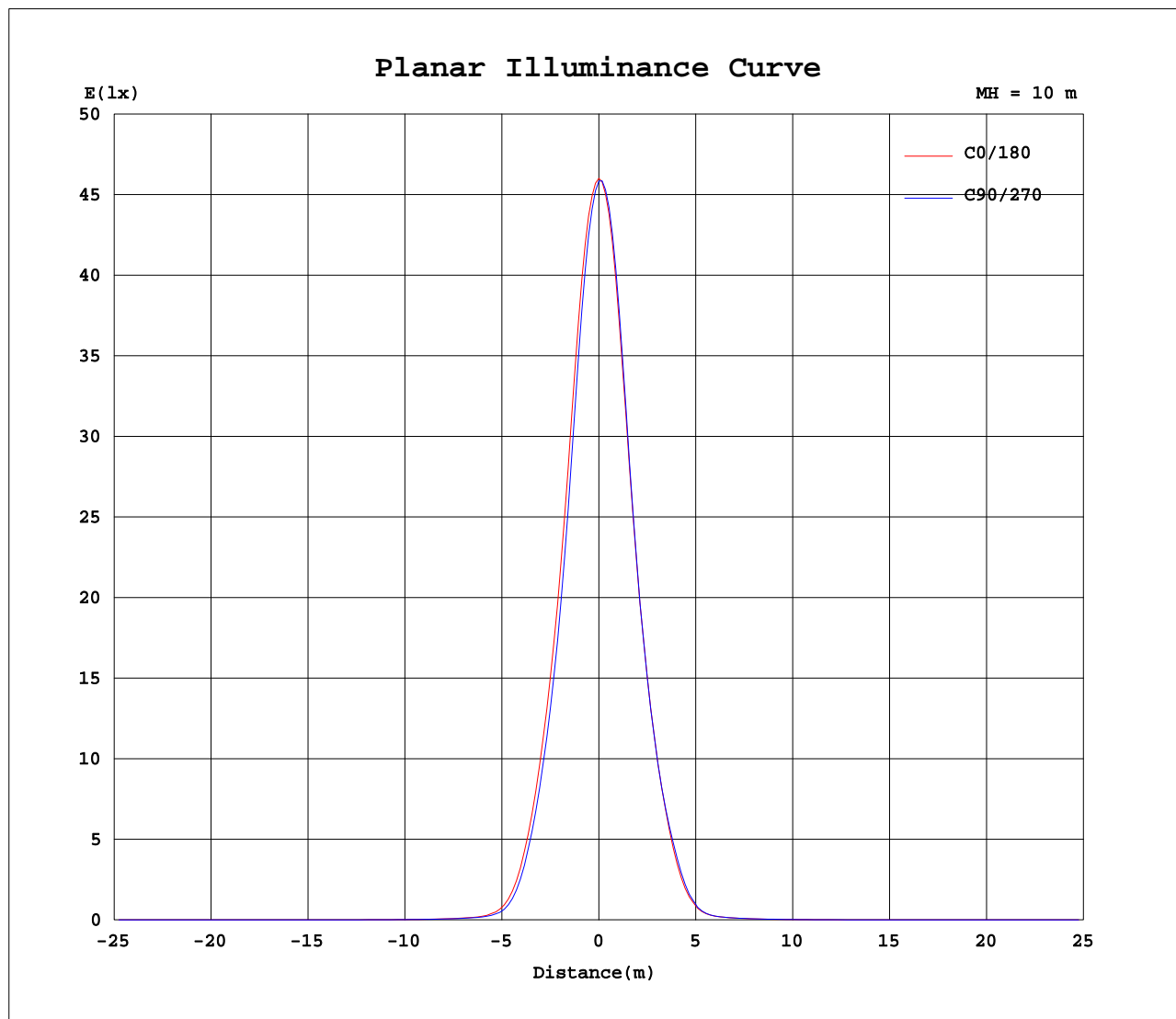
Test:U:220.8V I:0.0710A P:14.41W PF:0.9192 Lamp Flux:845.62x1 lm		
NAME: S100S1-13W-930-N	TYPE:Downlight	SERIAL No.:
SPEC.:3000K	DIM.: L108mm*W108mm*H126mm	
MFR.:		



C Range: 0 - 360DEG
 C Interval: 15.0DEG
 Test Speed: HIGH
 Temperature: 25.3DEG
 Operators: Meng Yongjian
 Test Date: 2017-06-16

γ Range: 0 - 90DEG
 γ Interval: 1.0DEG
 Test System: EVERFINE GO-2000B_V1 SYSTEM V2.0.288
 Humidity: 52%
 Test Distance: 5.850m [K=1.0000]
 Remarks:

Planar Illuminance Curve



C Range: 0 - 360DEG
C Interval: 15.0DEG
Test Speed: HIGH
Temperature: 25.3DEG
Operators: Meng Yongjian
Test Date: 2017-06-16

γ Range: 0 - 90DEG
 γ Interval: 1.0DEG
Test System: EVERFINE GO-2000B_V1 SYSTEM V2.0.288
Humidity: 52%
Test Distance: 5.850m [K=1.0000]
Remarks:

LUMINOUS DISTRIBUTION INTENSITY DATA

Test:U:220.8V I:0.0710A P:14.41W PF:0.9192 Lamp Flux:845.62x1 lm		
NAME: S100S1-13W-930-N	TYPE:Downlight	SERIAL No.:
SPEC.:3000K	DIM.: L108mm*W108mm*H126mm	
MFR.:		

Table--1

UNIT: cd

[illegible]

C Range: 0 - 360DEG
C Interval: 15.0DEG
Test Speed: HIGH
Temperature: 25.3DEG
Operators: Meng Yongjian
Test Date: 2017-06-16

```

γ Range: 0 - 90DEG
γ Interval: 1.0DEG
Test System:EVERFINE GO-2000B_V1 SYSTEM V2.0.288
Humidity:52%
Test Distance:5.850m [K=1.0000]
Remarks:

```

LUMINOUS DISTRIBUTION INTENSITY DATA

Test:U:220.8V I:0.0710A P:14.41W PF:0.9192 Lamp Flux:845.62x1 lm		
NAME: S100S1-13W-930-N	TYPE:Downlight	SERIAL No.:
SPEC.:3000K	DIM.: L108mm*W108mm*H126mm	
MFR.:		

Table--2

UNIT: cd

[illegible]

C Range: 0 - 360DEG
C Interval: 15.0DEG
Test Speed: HIGH
Temperature: 25.3DEG
Operators: Meng Yongjian
Test Date: 2017-06-16

```

γ Range: 0 - 90DEG
γ Interval: 1.0DEG
Test System:EVERFINE GO-2000B_V1 SYSTEM V2.0.288
Humidity:52%
Test Distance:5.850m [K=1.0000]
Remarks:

```

Photometric Data Table [cd]

G/C	0.0	15.0	30.0	45.0	60.0	75.0	90.0	105.0	120.0	135.0
0.0	4601	4599	4594	4593	4589	4590	4584	4586	4582	4584
3.0	4386	4387	4355	4348	4307	4300	4264	4276	4255	4283
6.0	3770	3786	3729	3716	3635	3616	3546	3558	3520	3566
9.0	2905	2938	2873	2855	2756	2724	2637	2647	2607	2660
12.0	2099	2127	2074	2056	1968	1933	1857	1861	1834	1880
15.0	1456	1478	1437	1427	1356	1331	1261	1270	1245	1294
18.0	932.6	943.7	908.6	898.6	844.6	829.9	788.0	799.5	790.4	825.3
21.0	524.0	519.1	500.7	484.4	457.8	441.0	415.3	427.3	422.3	450.9
24.0	236.4	238.0	223.3	218.8	196.6	190.7	175.2	180.6	177.8	192.9
27.0	95.99	99.08	93.43	89.55	80.26	74.73	68.43	69.53	69.84	74.28
30.0	44.93	46.47	45.16	43.19	40.16	37.72	35.24	36.25	36.68	38.23
33.0	27.51	28.38	28.28	27.69	26.19	24.87	23.81	24.77	26.01	26.74
36.0	19.39	20.04	20.16	19.92	18.86	17.95	17.17	18.01	19.04	19.97
39.0	14.00	14.60	14.68	14.55	13.84	13.24	12.73	13.41	14.17	14.89
42.0	10.16	10.69	10.93	10.81	10.36	9.834	9.466	10.01	10.73	11.18
45.0	7.180	7.713	8.115	8.114	7.751	7.211	6.757	7.395	8.120	8.495
48.0	4.654	5.195	5.808	6.078	5.639	5.001	4.618	5.172	5.959	6.475
51.0	3.253	3.327	3.906	4.396	3.870	3.406	3.345	3.508	4.159	4.775
54.0	2.091	2.321	2.577	2.957	2.627	2.295	2.102	2.422	2.840	3.294
57.0	1.022	1.231	1.656	1.906	1.624	1.222	1.066	1.349	1.849	2.175
60.0	0.3387	0.4794	0.8071	1.052	0.7984	0.4663	0.3476	0.5470	0.9757	1.237
63.0	0.0746	0.0677	0.2795	0.4446	0.2533	0.0568	0.0723	0.0763	0.3454	0.5493
66.0	0.0678	0.0503	0.0702	0.1002	0.0635	0.0459	0.0656	0.0481	0.0704	0.1481
69.0	0.0591	0.0393	0.0656	0.0393	0.0569	0.0393	0.0591	0.0415	0.0613	0.0437
72.0	0.0372	0.0328	0.0503	0.0328	0.0417	0.0328	0.0373	0.0328	0.0482	0.0350
75.0	0.0328	0.0328	0.0350	0.0328	0.0328	0.0328	0.0350	0.0328	0.0350	0.0328
78.0	0.0328	0.0372	0.0350	0.0328	0.0328	0.0328	0.0350	0.0372	0.0350	0.0350
81.0	0.0328	0.0372	0.0350	0.0350	0.0328	0.0350	0.0350	0.0372	0.0328	0.0350
84.0	0.0328	0.0372	0.0350	0.0372	0.0328	0.0372	0.0393	0.0394	0.0328	0.0415
87.0	0.0350	0.0372	0.0393	0.0372	0.0350	0.0372	0.0394	0.0394	0.0350	0.0372
90.0	0.0350	0.0372	0.0372	0.0372	0.0372	0.0372	0.0394	0.0394	0.0372	0.0372
G/C	150.0	165.0	180.0	195.0	210.0	225.0	240.0	255.0	270.0	285.0
0.0	4581	4583	4601	4599	4594	4593	4589	4590	4584	4586
3.0	4284	4327	4397	4404	4432	4429	4445	4431	4439	4418
6.0	3570	3657	3775	3793	3852	3837	3865	3826	3840	3797
9.0	2675	2781	2913	2935	3005	2986	3010	2944	2945	2889
12.0	1898	1984	2100	2127	2190	2174	2184	2115	2105	2049
15.0	1299	1372	1459	1481	1538	1518	1526	1463	1454	1400
18.0	834.8	884.3	952.6	971.8	1016	1001	1004	961.6	954.4	917.0
21.0	464.3	494.4	549.6	569.4	610.2	606.7	617.8	592.4	589.7	557.5
24.0	199.0	222.1	258.3	271.0	299.4	299.2	309.6	291.3	290.5	266.2
27.0	77.33	86.79	103.2	110.9	130.1	124.4	133.1	116.1	111.8	99.86
30.0	39.55	41.27	45.57	48.72	53.93	56.38	54.19	49.42	47.57	44.26
33.0	27.45	27.25	27.95	28.82	30.78	30.57	30.85	29.10	28.42	28.00
36.0	20.13	19.86	20.18	20.58	21.78	21.87	22.01	21.01	20.51	20.26
39.0	14.97	14.76	14.96	15.26	16.02	16.11	16.32	15.56	15.13	14.94
42.0	11.33	11.02	11.12	11.39	12.03	12.07	12.25	11.57	11.20	11.14
45.0	8.532	8.083	8.050	8.349	9.066	9.105	9.230	8.417	8.025	8.113
48.0	6.232	5.530	5.311	5.730	6.632	6.914	6.772	5.846	5.384	5.638
51.0	4.291	3.620	3.614	3.681	4.567	5.089	4.737	3.852	3.676	3.727
54.0	2.851	2.503	2.407	2.555	2.972	3.487	3.134	2.765	2.584	2.690
57.0	1.838	1.371	1.278	1.415	1.962	2.242	2.097	1.590	1.418	1.555
60.0	0.9450	0.5907	0.5203	0.6401	1.058	1.301	1.140	0.7081	0.5769	0.7102
63.0	0.3562	0.1067	0.0764	0.1455	0.4463	0.5900	0.4506	0.1543	0.0828	0.1565
66.0	0.0771	0.0612	0.0612	0.0744	0.0741	0.1823	0.0719	0.0744	0.0590	0.0722
69.0	0.0678	0.0524	0.0480	0.0700	0.0415	0.0635	0.0415	0.0635	0.0415	0.0634
72.0	0.0569	0.0350	0.0262	0.0439	0.0327	0.0525	0.0284	0.0395	0.0284	0.0416
75.0	0.0350	0.0350	0.0284	0.0262	0.0241	0.0285	0.0241	0.0284	0.0284	0.0306
78.0	0.0328	0.0372	0.0284	0.0262	0.0241	0.0241	0.0241	0.0284	0.0284	0.0306
81.0	0.0328	0.0372	0.0284	0.0262	0.0262	0.0241	0.0262	0.0284	0.0306	0.0284
84.0	0.0328	0.0372	0.0284	0.0262	0.0284	0.0241	0.0262	0.0284	0.0306	0.0284
87.0	0.0328	0.0372	0.0284	0.0262	0.0284	0.0241	0.0284	0.0284	0.0306	0.0284
90.0	0.0350	0.0372	0.0284	0.0284	0.0284	0.0241	0.0284	0.0284	0.0284	0.0284
G/C	300.0	315.0	330.0	345.0						
0.0	4582	4584	4581	4583						
3.0	4426	4409	4418	4400						
6.0	3822	3794	3826	3800						
9.0	2918	2896	2946	2933						
12.0	2070	2059	2108	2109						
15.0	1419	1409	1461	1463						
18.0	930.1	923.6	958.1	957.3						
21.0	565.6	552.0	559.9	552.1						

C Range: 0 - 360DEG

C Interval: 15.0DEG

Test Speed: HIGH

Temperature: 25.3DEG

Operators: Meng Yongjian

Test Date: 2017-06-16

γ Range: 0 - 90DEG

γ Interval: 1.0DEG

Test System: EVERFINE GO-2000B_V1 SYSTEM V2.0.288

Humidity: 52%

Test Distance: 5.850m [K=1.0000]

Remarks:

Photometric Data Table [cd]

24.0	268.2	255.2	262.0	252.0
27.0	101.2	97.25	102.0	101.0
30.0	44.35	43.23	45.89	45.91
33.0	28.59	27.77	28.54	27.98
36.0	20.85	20.46	20.70	19.90
39.0	15.35	15.07	15.17	14.52
42.0	11.47	11.30	11.30	10.65
45.0	8.667	8.497	8.494	7.699
48.0	6.366	6.457	6.182	5.301
51.0	4.476	4.800	4.333	3.411
54.0	2.994	3.330	2.837	2.413
57.0	2.067	2.185	1.899	1.301
60.0	1.160	1.312	0.9941	0.5286
63.0	0.4788	0.6207	0.3677	0.0993
66.0	0.0784	0.1781	0.0480	0.0656
69.0	0.0437	0.0634	0.0393	0.0569
72.0	0.0327	0.0525	0.0262	0.0351
75.0	0.0241	0.0328	0.0241	0.0262
78.0	0.0241	0.0262	0.0241	0.0262
81.0	0.0262	0.0262	0.0262	0.0262
84.0	0.0262	0.0262	0.0262	0.0262
87.0	0.0284	0.0262	0.0263	0.0284
90.0	0.0284	0.0262	0.0284	0.0284

C Range: 0 - 360DEG
C Interval: 15.0DEG
Test Speed: HIGH
Temperature: 25.3DEG
Operators: Meng Yongjian
Test Date: 2017-06-16

γ Range: 0 - 90DEG
γ Interval: 1.0DEG
Test System: EVERFINE GO-2000B_V1 SYSTEM V2.0.288
Humidity: 52%
Test Distance: 5.850m [K=1.0000]
Remarks: